

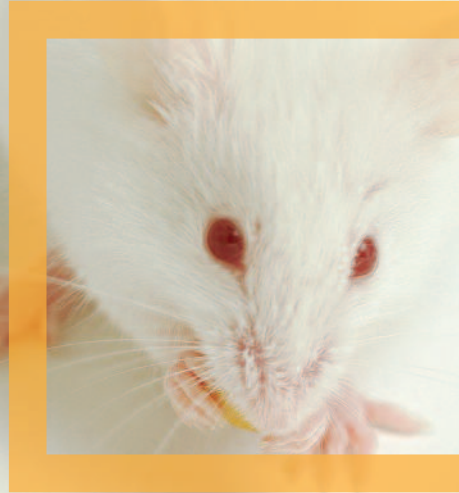


EVALUATE

the therapeutic potential
of CNS drug candidates
in Epilepsy

**GIVING MOLECULES
THE VALUE THEY DESERVE**





GIVING MOLECULES THE VALUE THEY DESERVE

Pharmaceutical industry needs an optimized drug development to enhance success in clinical phases

ABOUT US

SYNAPCELL is a preclinical CRO which provides highly predictive solutions to evaluate the therapeutic potential of CNS drug candidates in Epilepsy.



Our vision

To our mind, it is essential to identify the best drug candidates as early as the preclinical step in order to improve clinical development efficiency.

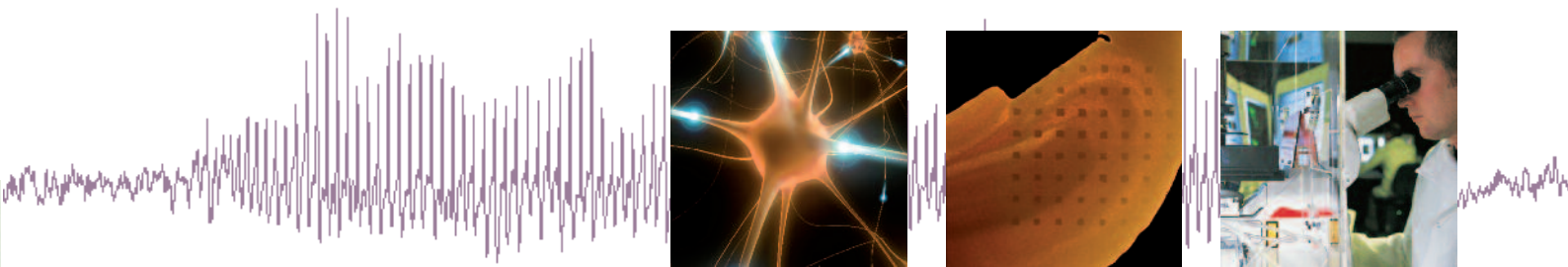
We are deeply convinced that this improvement relies on the development of both translational models and cutting-edge processes.

Our missions

QUALIFY the therapeutic potential of your lead compounds through our highly predictive solutions.

PROVIDE a great added value to your drug candidates with a precise targeting of their future indication.

OPTIMIZE your CNS drug development by increasing the probability of clinical success whilst saving valuable time and money.



TRANSLATING PRECLINICAL RESULTS INTO PREDICTIVE CLINICAL VALIDATION IN EPILEPSY

Our solutions

SYNAPCELL provides customized solutions which cover the entire range of customers needs, from early steps to the final answer.

In vivo

We assess the anti-epileptic, anti-epileptogenic or pro-epileptic effects of your drug candidates through :

- PREDICTIVE** animal models of epilepsy
- PROTOCOLS MIMICKING** clinical trials (e.g., cross-over, add-on, chronic treatment)
- QUANTITATIVE RESULTS** using EEG.

In vitro

We define the activity profile of your drug candidates on neuronal network through :

- INTEGRATED MODELS** on acute / organotypic brain slices

- VARIOUS EXPERIMENTAL** conditions (e.g., physiological, excitotoxic, epileptic)
- MULTISITE RECORDING** using MEA.

Our commitments

INNOVATION

We aim at providing innovative solutions that will lead to major breakthroughs and answer present therapeutical unmet needs.


ETHICS

We pay special attention to the well-being of our laboratory animals and to minimize the number of animals tested by developing and using more effective solutions.

Our customers

SYNAPCELL develops partnerships with managers in biotech and pharmaceutical companies involved in the development and promotion of drug candidates in the field of CNS pathologies.





QUALITY
We are certified ISO 9001 ensuring that our processes generate maximum performances and meet customer satisfaction.



**GIVING MOLECULES
THE VALUE THEY DESERVE**

